



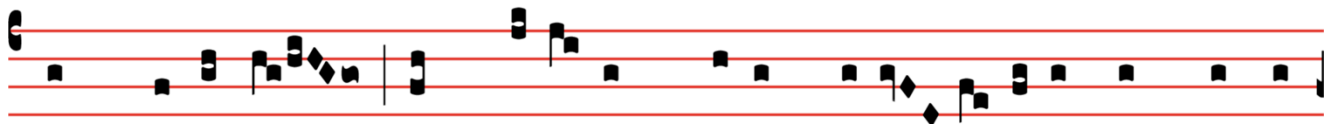
DOMINICA PRIMA ADVENTUS

TROPVS AD INTROITVS.

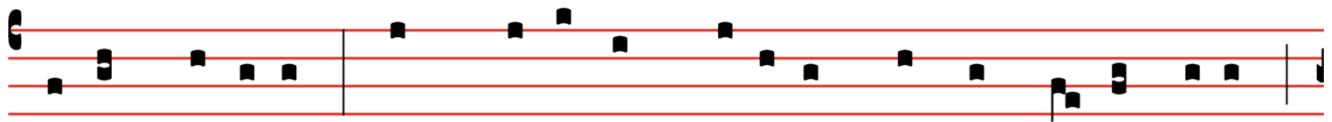
VIII.



anctís-simus namque * Gregó-ri- us cum pre-ces effúnde-ret



ad Dómi-num ut mú-si-cum donum e-i dé-super in carmí-



ni-bus de-dísset, tunc descéndit Spí-ri-tus Sanctus su-per e-um,



in spé-ci-e co-lúmbæ, et illustrá-vit cor e-jus, et sic



demum exórtus est cáne-re, i-ta di-céndo: Ad te le-vá-vi.

